



Betony Walk, Haverhill, CB9 7YB

**CHEFFINS**



## Betony Walk

Haverhill,  
CB9 7YB

A well presented three bedroom, end terraced house located on the popular Chimswell development. The property benefits from spacious kitchen diner, lounge, lean to, and bathroom. Available 22nd September 2025.

- Three Bedrooms
- Downstairs WC
- Rear Garden
- EPC Rating D
- Council Tax Band B
- Minimum 12 Month Tenancy



**£1,200 PCM**





## Entrance Hall

Stairs, door to:

## WC

Window to front, wc, wash hand basin

## Kitchen Diner

Window to front, fitted with matching wall and base units with laminate worktop over, electric cooker, space for fridge freezer, plumbing for washing machine, double door to:



## Lounge

Window to rear, double door to:

## Lean-To

Doors to garden

## Landing

Storage cupboard, doors to:

## Bedroom 1

Window to front, Storage cupboard

## Bedroom 2

Window to rear, Storage cupboard

## Bedroom 3

Bedroom 3

## Bathroom

Window to front, wc, wash hand basin, bath with shower over



## Rear garden

Mainly laid to lawn with concrete path leading to rear access gate

## Viewings

By appointment via the agents

## Holding Deposit

£276.00

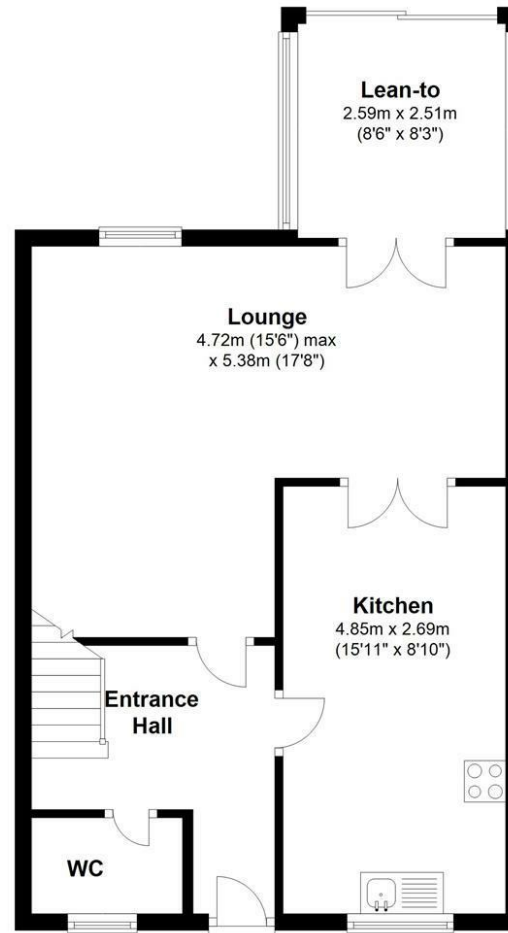
## Material Information

For more information on this property please refer to the Material Information brochure on our Website

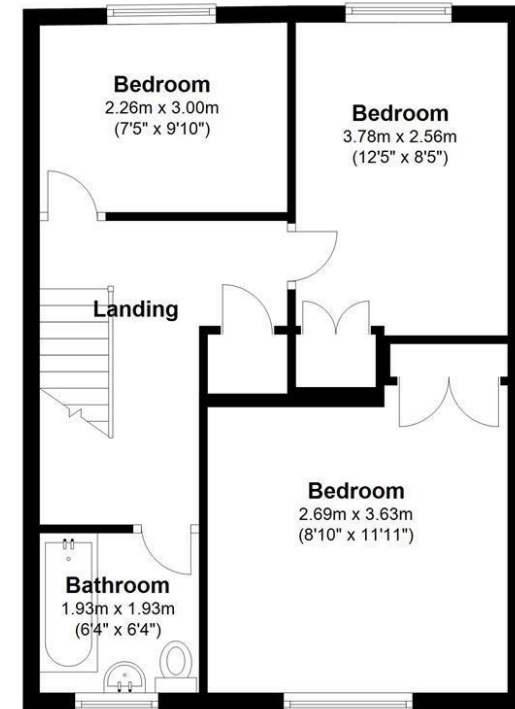


Energy Efficiency Rating		
	Current	Potential
Very energy efficient - lower running costs		
(92 plus) <b>A</b>		<b>81</b>
(81-91) <b>B</b>		
(69-80) <b>C</b>		
(55-68) <b>D</b>	<b>66</b>	
(39-54) <b>E</b>		
(21-38) <b>F</b>		
(1-20) <b>G</b>		
Not energy efficient - higher running costs		
<b>England &amp; Wales</b>	EU Directive 2002/91/EC	

## Ground Floor



## First Floor



### Agents note:

For more information on this property please refer to the Material Information Brochure on our website.

Cavendish House, 27a High Street, Haverhill, Suffolk, CB9 8AD | 01440 707076 | cheffins.co.uk

IMPORTANT: we would like to inform prospective purchasers that these sales particulars have been prepared as a general guide only. A detailed survey has not been carried out, nor the services, appliances and fittings tested. Room sizes should not be relied upon for furnishing purposes and are approximate. If floor plans are included, they are for guidance only and illustration purposes only and may not be to scale. If there are any important matters likely to affect your decision to buy, please contact us before viewing the property.

